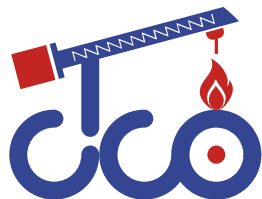


**sarl CTCO**  
TRADING AND CONTRACTING



**YOUR PROJECT .. OUR REPUTATION**





**sarl CTCO**  
TRADING AND CONTRACTING



 **Rue Ouamrouche Mohamed.**  
**Lot 42. Groupe Propriétaire 63 BT G.**  
**El Biar, Daïra - Ben Aknoun Wilaya d'Alger.**

 **(+213) (0)23 37 31 48**

 **info@sarlctco.com**

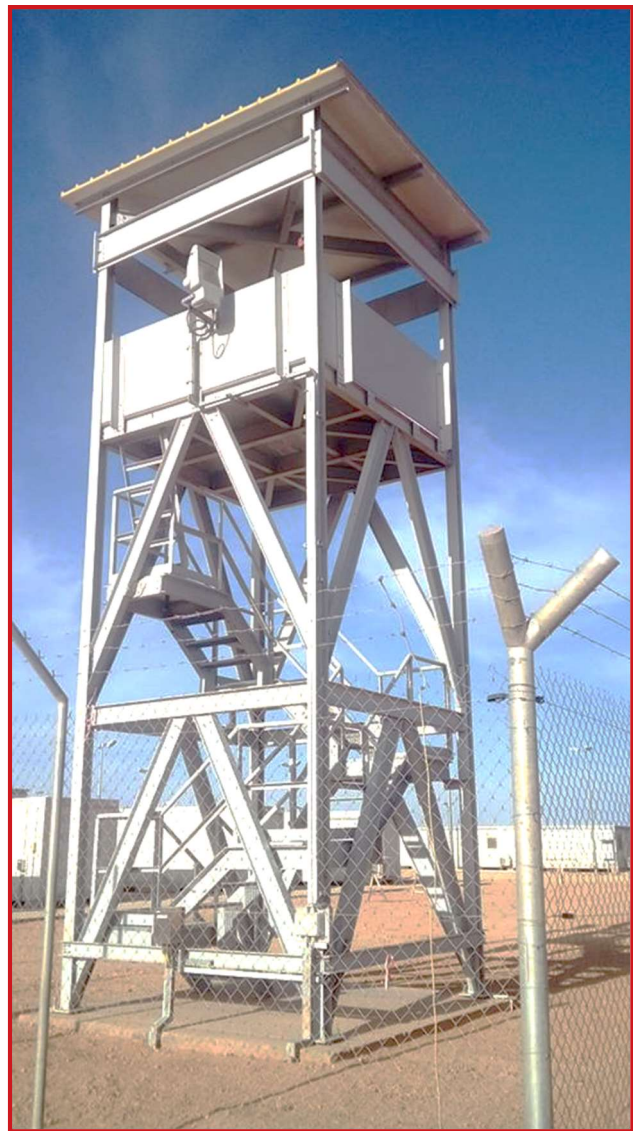
 **www.sarlctco.com**





# INTRODUCTION

- **CTCO** Has been established in 2005 as a private owned Company with an ability to construct Industrial Projects.
- **CTCO** executed the first project in 2006 with Brown & Root - Condor (BRC).
- **CTCO** had been concentrated to participate on Oil & Gas Field construction. Like Pipe Line, Flow Line, Plat Form and access roads.
- In 2014, **CTCO** started the activities of residential building.
- In 2016, **CTCO** got its first pipe line project in Tunisia.



**CTCO** as an independent, privately owned company, is capable of providing wide range of services in Engineering, Procurement & Construction of Oil and Gas Field projects in full compliance with the international codes and standards.





## SCOPE OF ACTIVITIES

**CTCO** define their main scope of activities as follows:

- **Construction and Pre commissioning of Oil, Gas, Product and Water Pipelines.**
- **Terminal and Tank form piping**
- **Construction and Pre commissioning of Oil, Gas and Product Facilities, such as:**
  - ✓ **Central Production Facilities,**
  - ✓ **Gathering Stations,**
  - ✓ **Compressor and Pump Stations,**
  - ✓ **Water Disposal/Injection Facilities,**
  - ✓ **Storage Tanks.**
  - ✓ **Power Station.**
- **Construction of Gas Well heads and Associated Facilities Building.**
- **Plat Form and Access Roads.**
- **Construction of Steel Structures.**

**CTCO** is capable to carry out all types of construction works to execute such projects:

- **Civil Works - Earth works, Concrete works & Construction of Gas Well head, Buildings, Roads, Fencing.**
- **Mechanical Works - Prefabrication and erection of pipe lines, unit piping , Tanks, Steel structure, Installation & Alignment of equipment and Blasting , Painting & Coating.**
- **Electrical and Instrument Installation.**
- **Pre-commissioning - Hydrostatic, Pneumatic and Vacuum testing, checking of vessels and rotating equipment, cable and loop testing.**

■ **We have established our safety and quality systems in compliance with the Requirements of international codes and standards.**

■ **Our organization adopted Project Based Management approach with efficient links between the head office and the project personnel.**







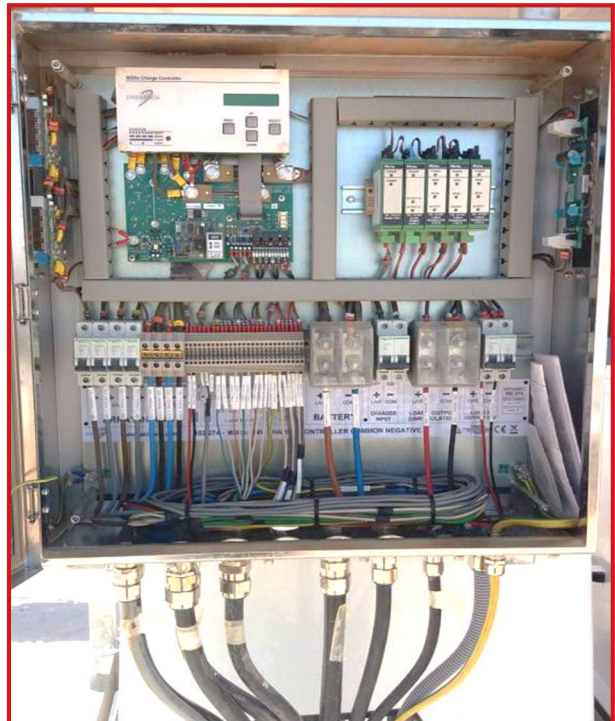
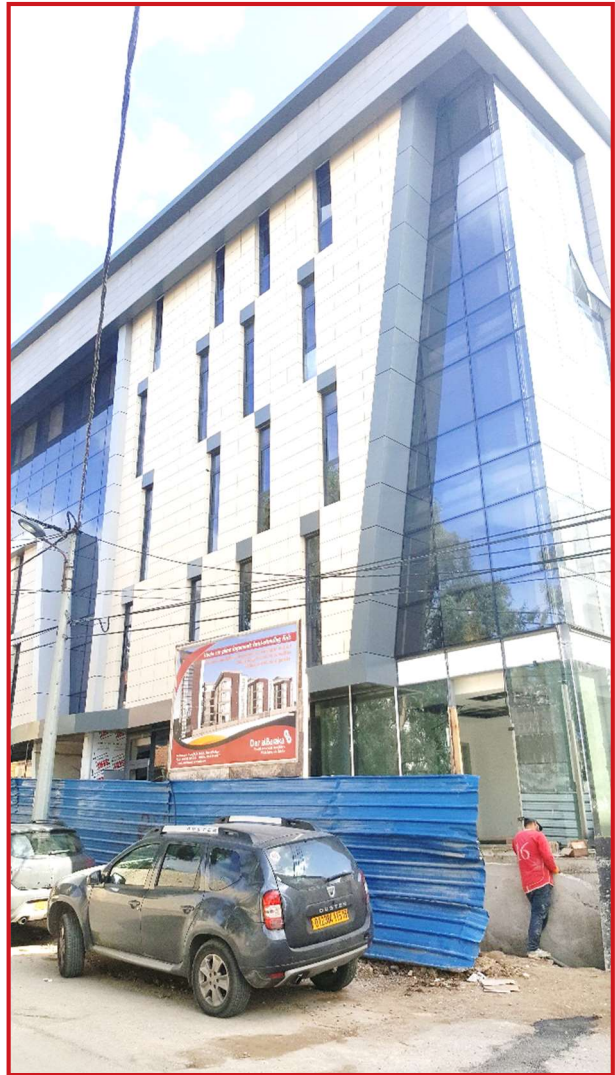
# OIL AND GAS PRODUCTION FACILITIES

*During last few years **CTCO** successfully executed all types of civil, mechanical, electrical and instrumentation works within the scope of various production facility projects for the following clients:*

- **BP, SONATRACH, STATOIL and JV (ISG).**
- **Petrofac.**
- **Sontrach.**
- **La Société Tunisienne d'Electricité et du Gaz (S.T.E.G.)**
- **Technip.**
- **Bonatti**
- **Dar Al-Baraka.**
- **Brown & Root – Condor (BRC).**

**CTCO** Generally carries out the works in accordance with international codes and standards, such as **ASME-B31.3, API Standard 620, API Standard 650, etc.**

*We assist the main contractors during all pre-commissioning and commissioning process, hydro tests, cable tests, loop test and other related activities.*





**CTCO** has wide range of experience in all activities included in pipeline construction works:

- *Topographical Survey and Soil Investigation.*
  - *Right of Way, Stringing and Bending Pipes.*
  - *Trench Excavation, Padding and Backfilling, Use of explosives for blasting in rocky areas.*
  - *Welding and Tie-in.*
  - *Blasting , Painting & Coating,.*
  - *Construction of Block Valve Stations.*
  - *Installation of Cathodic Protection.*
  - *Installation of Communication Cables.*
  - *Non-Destructive Testing.*
  - *Cleaning, Gauging, Hydrostatic Testing and Drying.*
- 
- *Our pipeline construction works are always in compliance with the international codes and standards, such as:*
  - *ASME-B31.4 "Pipeline Transportation Systems for Liquid and other liquids, Hydrocarbons.*
  - *ASME-B31.8 "Gas Transportation and Distribution Piping Systems",*
  - *API 1104 Standard "Welding of Pipelines and Related Facilities".*
  - *We comply as well with all specific requirements of our clients.*







## FLOW LINE

**CTCO** has successfully executed various pipeline projects for the following Clients,

- **SONATRACH:**

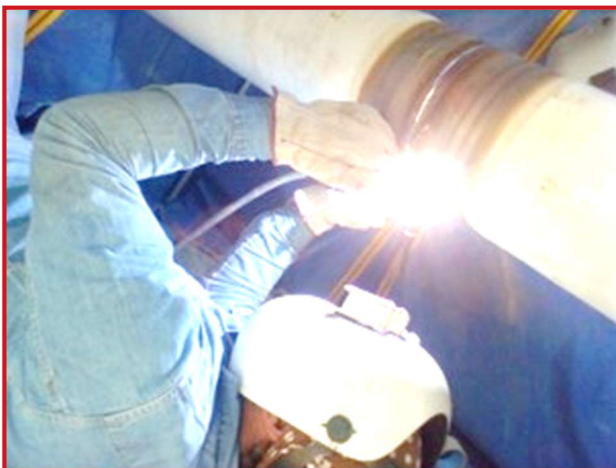
*Pose d'un Réseau Injection de Gaz sur le champ de HMD. Construction of heavy wall Flow lines, 12", 10" and 6" (32km length).*

- **ISG:**

*Construction of TEG Header and Gathering system flow lines of 12"Ø, 6"Ø & 8"Ø.*

- **TECHNIP:**

*Algiers Refinery Rehabilitation and Adaptation Pipeline Works of 5 underground Pipelines Ø 26", 16", 10" and 6".*





## OTHER SERVICES

### ✓ WORKSHOPS

**CTCO** has its own workshop for *Fabrication and welding as follows:*

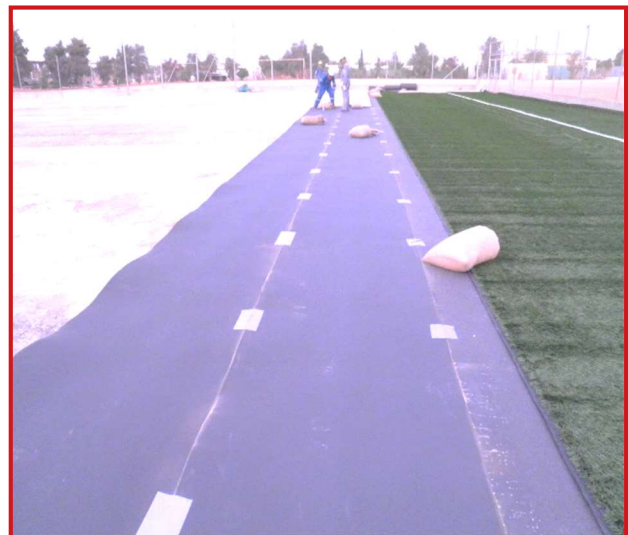
- *Fabrication and assembling of Skids and manifold complying the requirements of international codes and Standard.*
- *Fabrication and assembling of Steel Structure.*
- *Fabrication and assembling of all kind of the storage tanks (Horizontal, Vertical, Sphere, and Vessels).*



### ✓ MANPOWER

**CTCO** provides the specialized manpower to other companies inside Algeria and overseas.

- *(Senior level officials, Engineers, Supervisors, Team Chiefs, Welders, Pipe fitters, Mechanics, Electricians, Instrumentation & Civil Technicians).*
- *SARL C.T.C.O has permanent technical management staff as well as labours ranging from 200 to 400 persons according to the requirements and the conditions of work.*
- *Specialized personnel of management and of administration (permanent personnel)*
- *Highly experienced technical personnel(permanent personnel)*







*The strong belief of **CTCO** Management that “our people, their motivation And dedication to customers, in safe and clean environment, are our main assets” is the main guidance in the work of the HSE Department.*

*Hence, the HSE Department planned their strategic objectives, which are summarized as follows:*

- ✓ *Identification and elimination of all hazards,*
- ✓ *Provision control and recovery for high rated hazards,*
- ✓ *Continuous reduction of low rated hazards by application of best practice management methods.*

*To achieve this plan with its prime target as **ZERO** accidents, a program was developed, based on training, implementation, monitoring and correcting situations and conditions.*

*Medical coverage is implemented on all sites to ensure the medical help when needed.*

*Distribution of Personal Protection Equipment (PPE) is obligatory measure to prevent injuries. Safety indication training is given to all employees to increase their understanding and knowledge towards HSE. First Aid and Fire Fighting training is given, as well, to provide qualified personnel on sites to face tough situations. Drivers and other staff receive “defensive driving training” to minimize accidents.*

*Our safety manuals and instructions are being reviewed and approved by our clients.*

*Implementation of HSE regulations and standards are monitored during the management safety meetings on sites.*



# HEALTH, SAFETY & ENVIRONMENT OVERVIEW

**HSE Philosophy & Principles**

**HSE Policy**

**Drugs & Alcohol Policy**

**Land Transport Policy**

**Leadership & Commitment**

**Hazards Recognition**

**Housekeeping**



## HSE Philosophy & Principles

- *"Personal injury, illness, damage to property and environment are not acceptable costs of doing business"*
- *"It is our belief that all accidents occur as the result of a specific cause or causes and therefore, preventable"*

**CTCO** Endeavour to conduct its business in such a way as to protect the health and safety of its employees, sub contractor employees and other persons affected by its activities as well as to protect environment, minimize pollution, conserve resources and seek continual improvement"

## HSE Policy



It is the policy of **CTCO** to conduct its business in compliance with applicable legal requirements, protect the health & safety of its employees, its sub-contractors employees and other personnel who may be affected by its activities as well as to protect environment, minimize pollution, conserve resources and achieve continuous improvement in HSE performance.

For this effect **CTCO** is committed to;

- Reduce the risk and hazards to health, safety and the environment to levels which are as low as reasonably practicable.
- Empower all employees to stop all unhealthy, unsafe or environmentally damaging work.
- Ensure that all employees associated with the development and operation of its activities has the required skills and support to meet this commitment.

Our commitment to protect the Health, Safety and environment, ranks equally with other business objectives and we believe that these objectives can only be achieved effectively and successfully if performed safely.

We believe that all incidents are preventable and managing Health, Safety and Environmental protection is a responsibility of the line management.

**CTCO** and its sub-contractor employees on their part have a clear responsibility to co-operate and do their utmost to achieve these commitments. They are required to exercise self discipline, maintain a high level of awareness, prevent injury to themselves, others and to protect the environment.

## Drugs & Alcohol Policy

It is the policy of **CTCO** to perform all its operations without any adverse health effects to any one and committed to protect the health & safety of its employees, sub contractors & all other personnel affected by its operations.

To meet this commitment **CTCO** has identified that, consumption of alcohol, narcotics & drugs are the major health issues.

**CTCO** will eliminate the abuse of these substances by enforcing a strict Drugs & Alcohol policy:

- *All employees, including subcontractor employees commencing work on a project site are subject to Drugs and Alcohol testing where required*
- *The consumption of any intoxicating substances; alcoholic beverages, narcotics & illegal drugs is strictly prohibited.*
- *No employee of **CTCO** or subcontractor shall enter a site while under the influence of drugs, narcotics and/or alcohol*
- *Use of prescription drugs during the working hours is prohibited unless prescription physician states that the medication will not impair the ability of a person to perform his specific duties.*
- *Drive a vehicle under the influence of these substances is strictly not permitted.*
- *Project Management team, Construction team and employees shall be aware of the company's Drug and Alcohol Policy*
- *Ensure random screening for drugs and alcohol is performed as required*
- *All personnel are encouraged to highlight the alcohol or drug abuse.*





## Land Transport Policy

In addition to our health, safety and environmental policy, **CTCO** is committed to conduct their land transport activities such that;

• All vehicles used by **CTCO** employees, subcontractors, suppliers & vendors (in the execution of **CTCO** contracts) staff undertaking work related road transport journey and/or road transport activities shall comply with government regulations and company standards.



- All drivers authorized to drive on company business are;
- Legally licensed to drive.
- Meet relevant company driver competency requirements
- Made aware of and are reminded of hazards that exists and how they can be controlled through regular communication programmer.
- All work related journey undertaken by **CTCO** staff including sub-contractors, Vendors and suppliers to and from all sites shall be covered under a Journey Management Plan
- Driving in the field, away from towns at night will only be undertaken in extraordinary unforeseeable operational situations.
- Strictly adhere to traffic regulations, speed limits, driving hours and rest periods
- **CTCO** emphasizes that every employee shall cooperate and do their utmost to achieve our ultimate health and safety target which is "ZERO INCIDENT."

## Leadership & Commitment

**CTCO** Management provides a strong and visible leadership to promote a culture in which all employees share a commitment to HSE. They do this through setting a personal examples by,

- Communicating HSE expectations with employees
- Personal participation in HSE activities.
- Putting HSE matters high on the agenda of meetings.
- Providing immediate and visible response and involvement in the case of an incident or any other disruption to normal business.
- Recognizing achievement.
- Allocating appropriate resources to meet HSE targets (e.g., finance, manpower, skills and training).
- Personally involved in the improvement efforts arising from the audits and management 'review' of **CTCO**'s HSE Management System.





## Hazards Recognition

The diagram below provides the methodology used and the processes involved in Hazard Identification & Risk Management undertaken by **CTCO** to recognize, assess, review and effectively manage risks.

### Identification:

- Pre-Planning
- Method Statement
- Job Safety Analysis

### Assessment

- Impact
- Risk Factor
- Mitigation Measure
- Residual Risk

### Implementation & Communication

### Review & Update

Identify Activities

Identify Hazards

Assess Impacts

Analyse Risk

Establish Mitigation Measures

Communication & Training

Audit, Inspection & Updating

## Housekeeping

*Housekeeping is a starting point of **CTCO** HSE Programme in which everyone is positively involved. It is a first-line of defense against accidents and injuries.*

- *This Program includes but not limited to; Proper storage, adequate space for machinery and plant, waste management & camp hygiene; kitchen & food storage.*
- ***CTCO**'s line management commitment is demonstrated by the continued efforts of supervising staff towards housekeeping.*
- *Adequate time is assigned on daily basis to ensure that good housekeeping is maintained.*
- *Any instances of poor housekeeping that results in the creation of a tripping, slipping, fire or health hazard is immediately dealt with.*
- *Bins and containers are provided in sufficient quantities within the construction work areas, including kitchen, camps, site offices, medical centre and workshops*
- *On a weekly basis scrap trash and other waste is removed from the project areas and transported to approved dump.*





## QUALITY ASSURANCE, QUALITY CONTROL

*One of the main priorities of **CTCO** is to maintain high quality of the works ,and to improve continuously the Quality System. We have long, outstanding reputation for the quality of our work, and in order to stay in the market, our main task is to keep on improving this standard.*



*We cover all aspects of the construction QA/QC, such as:*

- ✓ *Preparation of Inspection and Test Plans (ITP),*
- ✓ *Development of Procedures and Method Statements,*
- ✓ *Preparation and qualification of welding procedures,*
- ✓ *Qualification of welders,*
- ✓ *All kind of non-destructive testing (NDT) and non-destructive evaluation (NDE) –*
- ✓ *radiographic, ultrasonic, magnetic particle, liquid penetrant, positive material identification.*
- ✓ *Traceability of materials, installation and erection works.*
- ✓ *Non-conformance control.*
- ✓ *As-built mark-up,*
- ✓ *Preparation of test packages, loop folders, pre commissioning check forms.*
- ✓ *Pre commissioning activities – hydrostatic, pneumatic and vacuum testing, cable and loop testing.*

*We posses all type of required inspection equipments. our key QA/QC personnel maintain Minimum ASNT Level II in all NDT/NDE disciplines.*